

Well connected parks that reflect Nelson identity a premier indoor and outdoor events space, connect people with the natural environment. Well connected parks that reflect Nelson identity a premier indoor and outdoor events space, connect people with the natural environment.

THE PROJECT

Nelson City Council has initiated design work on Rutherford Park, Trafalgar Park (which includes Kinzett Terraces) and the Maitai Walkway. The parklands need improvement because they are poorly connected to the city, have ad hoc car parking, and lack facilities to attract a wide range of people. The environment and cultural heritage of the Maitai River is also sadly neglected.

Our intention is to start to build improvements by mid 2012, so we want you to have your say now in what happens in the future.

We are here to inform you on what we are proposing and to ask for your opinions. The vision that we are showing has been developed from community consultation for Heart of Nelson, and the 2010 Rutherford and Trafalgar Parks Reserves Management Plan.

VISION

Rutherford Park, Trafalgar Park and Maitai Walkway will be high quality urban parklands that are a model for economic, environmental, social and cultural sustainability.

The three parks will grow into one iconic active urban space which attracts a diversity of people through its integrated landscape, its links with the Maitai River and the Haven, and through its well-designed multiple-use recreation facilities and areas.

GOALS

- » An accessible park - visible and safe for people of all abilities to move into and through the Park with ease.
- » A connected park - linked to the wider active transport connections in the City.
- » A flexible park - to meet the needs of current users of the Park without constraining future uses.
- » An active park - encouraging a range of activities, including community sports, informal recreation, and cultural events.
- » A sustainable park - with an ecological framework that will support biodiversity and create a clean and healthy environment.



accessible



connected



sustainable



flexible (source Nelson Arts Festival)

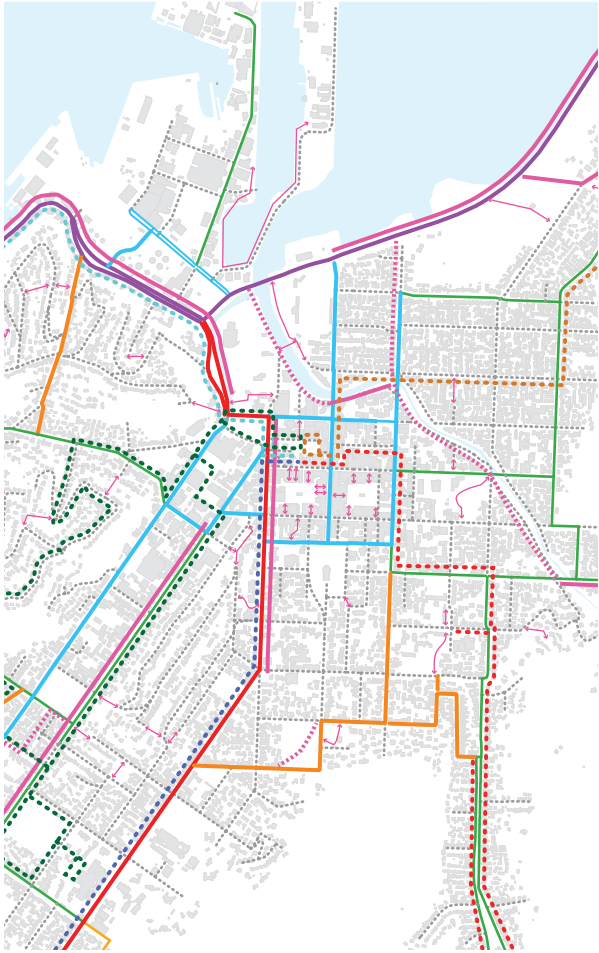


active - recreation



active - cultural (source Tim Wright)





CONNECTIVITY

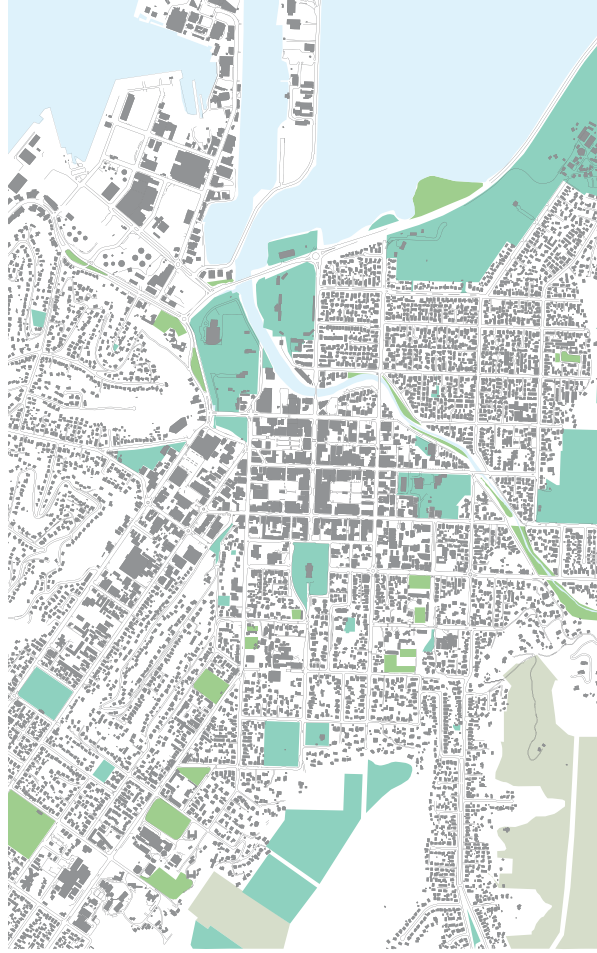


Trafalgar St Bridge, 1922

Key

- SH6
- Arterial
- Principal
- Collector
- Sub Collector
- Local
- Recommended Cycle / Pedestrian links *
- On/Off Road Cycle / Pedestrian paths
- Connecting Cycle / Pedestrian paths
- Bus route - Nelson > Tahunanui > Stoke > Richmond incl. late bus
- Bus route - Nelson > Bishopdale > Stoke > Richmond incl. late bus
- Bus route 1 Hospital Toi Toi
- Bus route 2 Atawhai
- Bus route 3 The Brook

* Source: <http://www.nelsoncitycouncil.co.nz/assets/Uploads/Downloads/shared-pathway-map-nelson.pdf>



OPEN SPACE

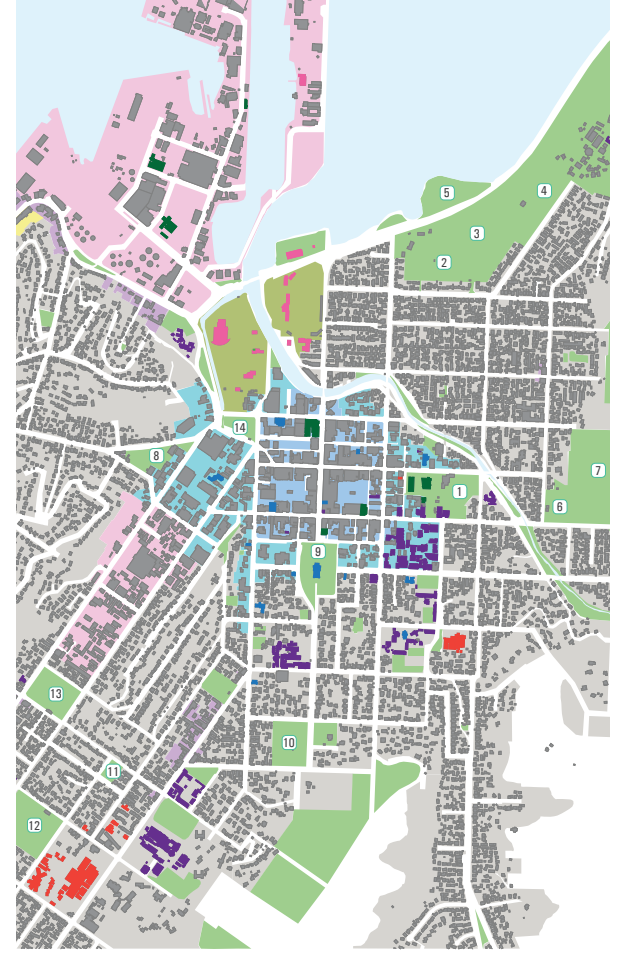


Trafalgar Park, 1967

Key

- Open Space / Recreation *
- Rural *
- Other Significant Green Space (mixed zones)

* Source: Nelson Resource Management Plan 13 August 2007



COMMUNITY INFRASTRUCTURE

Key

- Residential *
- Industrial *
- Suburban Commercial *
- Inner City - Fringe *
- Inner City - Centre *
- Leisure Area *
- Rutherford + Trafalgar Parks
- Significant Green Space
- Government Buildings
- School Buildings
- Health Buildings
- Religious Buildings
- Recreation Buildings

* Source: Nelson Resource Management Plan 13 August 2007

- | | | |
|------------------------|---------------------|------------------|
| ① Queens Gardens | ⑦ Botanics Hill | ⑬ Victory Square |
| ② Neale Park | ⑧ Pioneer Park | ⑭ Anzac Park |
| ③ Cuppy Park | ⑨ Cathedral Grounds | |
| ④ Founders Park | ⑩ Fairfield Park | |
| ⑤ Peace Grove | ⑪ Wigzell Park | |
| ⑥ Botanics Sportsfield | ⑫ Broads Field | |

- » The parklands are located at a gateway location on SH6 and Haven Road for entry into the City Centre, which makes it an important icon for Nelson.
- » The parklands are uniquely sited along cycle and pedestrian routes, beside SH6 and beside the main bus routes, which should make it easy to reach by many people.
- » The parklands provide a stepping stone between the City Centre, Nelson Haven and Marina.
- » The flatness of the topography makes the parklands easy to walk to.
- » The grid of the City Centre facilitates pedestrian access.
- » The river's edge which bisects the parklands is an iconic feature of Nelson, and an important access line for pedestrians and cyclists, but it needs to be enlivened to make it safe.

- » Rutherford Park, Trafalgar Park and Maitai walkway have a combined area of 26.6 hectares.
- » The parklands are situated within the Nelson Central City area, on the immediate edge of what is defined as the City Centre.
- » The parklands offer the best opportunity for an urban parkland - where a range of activities can occur to serve the diverse demographic of the city. It should not be dominated by any one use.
- » Nelson has a good range of parks of different types- Neale Park, Founders, Queens Garden and Pioneers Park all offer specific recreation facilities, and all are easily accessible via Nelson's street grid or Maitai walkway. But the city needs a good quality central park that will become the vibrant community centre, connecting the city to the sea.

- » The parklands are located at the centre of different land uses: port activities to the north-west, residential to the east and west; City Centre to the south; and a school to the west.
- » Having a diverse range of land uses around the park will help generate its popularity and vibrancy.
- » It is important that we have an appropriate mix of uses to ensure community is attracted to these parklands.

IN BRIEF

The parklands are uniquely located on transport links and beside the city centre. It could become important urban open space that serves a different role to other parks in the city.

RUTHERFORD & TRAFALGAR PARKS & MAITAI WALKWAY
FOR NELSON CITY COUNCIL BY Wā

BROAD CONTEXT

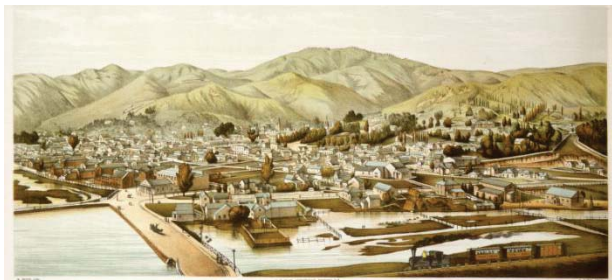


Heaphy Sketch, 1852



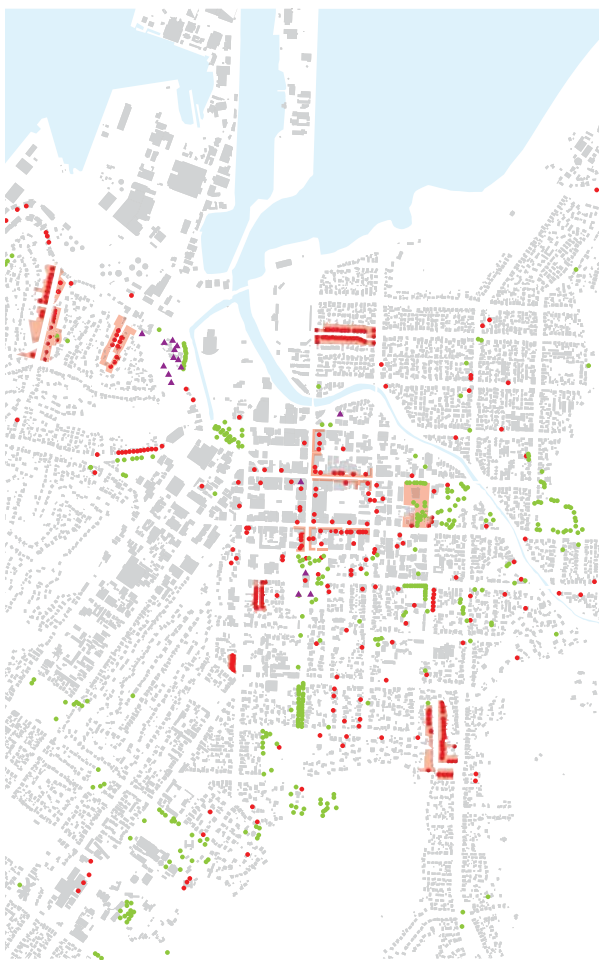
Aerial Photo, August 1960

The two images above look west over Nelson, showing the change of Paruparu Harbour from 1852 to 1960 and the infill that has occurred



Archibald Dunnington, 1889

CURRENT HERITAGE SITES



- Key
- Heritage Building / Object / Place
 - Heritage + Landscape Trees
 - ▲ Archeological Sites
 - Heritage Precincts

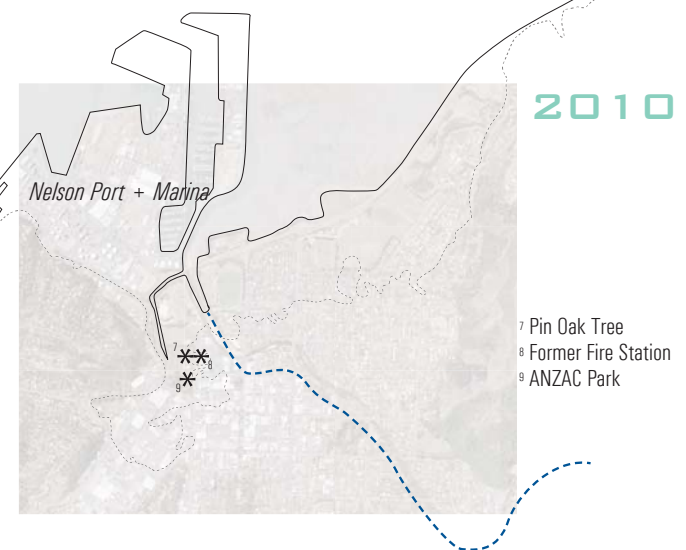
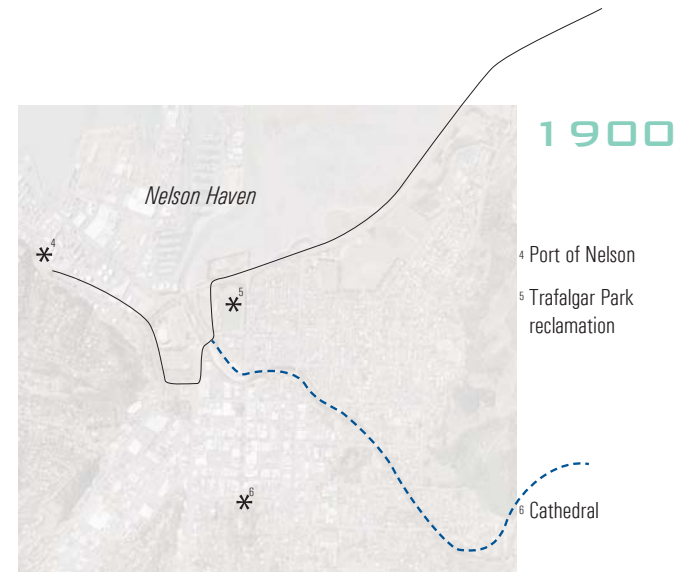
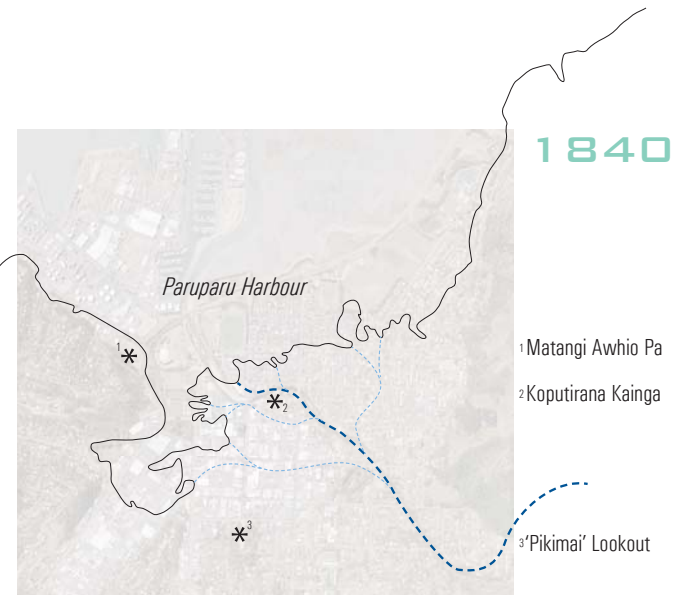
Source: NCC Regional Management Plan

IN BRIEF

Nelson has been settled by Maori since the 1200s, and by Europeans since the 1840s. Since then the coastline has changed dramatically. The parklands are on reclaimed land, through which the Maitai River and Saltwater Creek extend.

HISTORICAL TIMELINE

- 1200s ■ Early iwi arrived onboard the waka 'Kurahaupo'
- 1770 ■ Abel Tasman 'discovered' NZ, coming to Golden Bay, where 4 men were killed by local Maori, Tasman never set foot on land.
- 1770 ■ Captain James Cook arrives in Nelson
- pre 1841 ■ The area known as Rutherford park was Paruparu Estuary.
- 1841 ■ Nelson is founded
- 1842 ■ The first immigrant ships arrive. Saltwater bridge and causeway constructed.
- 1852 ■ The coastal edge of Paruparu Estuary reinforced by stone bunding.
- 1889 ■ The town fringe encroaches on Paruparu Estuary, land reclamations extend the town boundaries
- 1900 ■ The Trafalgar Park reclamation is completed and the town has reclaimed most of Paruparu Estuary up to Halifax Street (southern extent of Rutherford Park) and north to Trafalgar park
- 1900-1912 ■ Dikes are constructed out of locally quarried gravel around what is now known as Rutherford Park.
- 1912-1940s ■ The Rutherford Park site is filled with domestic and industrial waste
- 1940s ■ Site is covered with topsoil and grassed, croquet clubs etc built. Act establishes park.
- 1950s-2000 ■ Port Reclamations extend into the Nelson Haven
- 2011 ■ The only remnant left of Paruparu Estuary is what is known as Saltwater creek and lower tidal reaches of Maitai



CULTURAL SITES OF SIGNIFICANCE

- » 'Matangi awhio' Pa site and Fishing Kainga – Hillside and Flat of Auckland School (just to the west of the site - now a hillside reserve. One translation of Matangi awhio is swirling winds.
- » Historic Buildings (Former Fire station), Corner of Paruparu Road & Halifax Streets (building currently a real estate office - Privately owned, Plunket Room, and Citizens Advice Bureau - both owned by the Council). (Former Premier Tobacco Co. Building), at 3 Halifax Street (Building currently the Refinery Arts Gallery) - owned by the Council.
- » Pin Oak Tree, Rutherford Park opposite ANZAC park.
- » ANZAC Park (appears in quite a few historic photos)
- » Kainga 'Koputirana' Site to the southeast on the banks of the Maitai, between Trafalgar and Collingwood Sts.
- » Two of the land parcels that make up Rutherford Park were acquired from the 'Maori Reserve' by the Public Works Act. Local iwi have an interest in these land parcels and have a current claim with the Waitangi Tribunal.

RUTHERFORD & TRAFALGAR PARKS & MAITAI WALKWAY
FOR NELSON CITY COUNCIL BY Wā

HISTORICAL CONTEXT





KEY

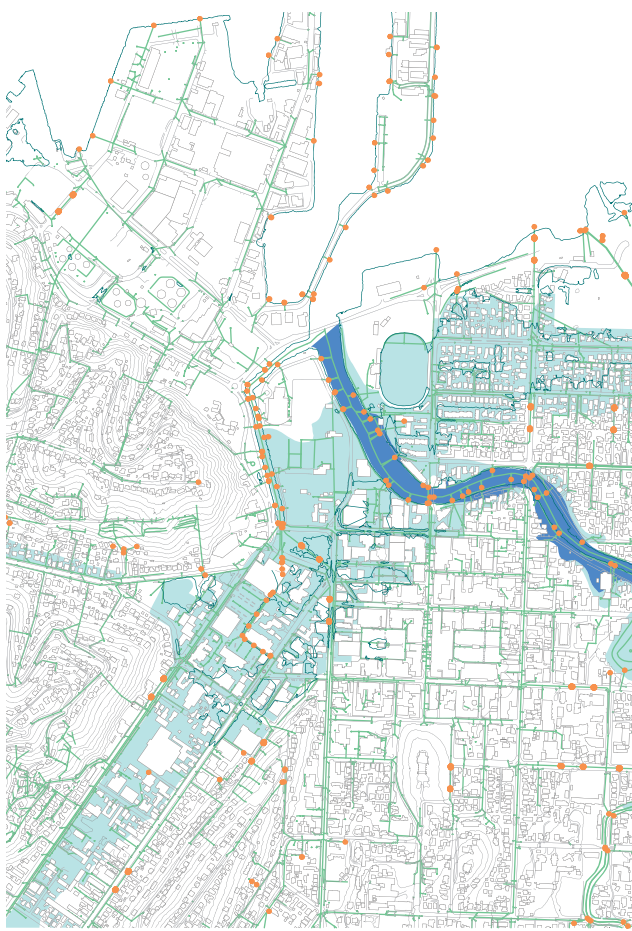
- Reclaimed land with fill consisting of wood, domestic waste, sand and boulders *
- uncontrolled fill (early 1900s)

Source: * GNS (1998) Geology of the Nelson Area

RECLAMATION

GEOLGY + LANDFORM

- » The parklands are located within the lowlands of Nelson and are framed by the Port Hills and Maitai River corridor.
- » Trafalgar Park is mostly land which has been reclaimed from the mud-flat for the people of Nelson by the Athletic Ground Company Limited, for cricket, football, cycling and other sports and athletic recreations.
- » Rutherford Park is predominantly underlain by reclaimed land identified as hard and domestic fill. Layers of rubbish mixed with soil are beneath the surface to a depth of approximately 2m across most of the site. Over the top is fill cover of approximately 0.5-1.0 meter thickness.
- » At the east of the site there is a lobe of the Maitai River delta comprising the Appleby Gravel formation of well sorted gravel with layers of sand, silt and clay.
- » Underlying the layers of fill/rubbish are in situ marine sands, silts and clayey gravels which would have formed the basis of historical tidal mud-flats.
- » Building and paving is difficult and requires additional engineering consideration as the ground is continuously settling as the rubbish layers decompose and there is no bedrock.
- » Potentially some contaminated leachate from the rubbish is capable of draining into the creek, river and sea.



Sea Level Rise Projection.

- Vulnerable to 1m SLR
- Vulnerable to 1.9m SLR

Source: Goodwin, E. (1999) Effects of Climate Change on the Nelson-Tasman Region.

KEY

- NCC flood path overlay
- NCC inundation overlay
- inlets and service covers
- stormwater pipe

Source: Nelson Resource Management Plan, 28 January 2008.

FLOODING

HYDROLOGY

- » The Maitai River transverses the Nelson City area and originates in the uplands of Mt Richmond Forest Park.
- » The name Maitai, is thought to be derived from a single matai tree which once grew on the bank of the river*.
- » Saltwater Creek is the last remnant of Paruparu Estuary, now reduced to a narrowly constructed channel beside Haven and QE2. It drains a large area of land reclaimed and otherwise altered since European settlement in Nelson.
- » There are many outlets in the parklands which could be upgraded to improve water quality.
- » Potential sea level rise is a concern for Nelson.
- » The parklands are an important overland flow route and storage for flooding.



Cooling off in Saltwater Creek, 1967. Source: Nelson Photo News

* DOC & NCC (2003) Living Heritage, Growing Native Plants in Nelson.

IN BRIEF

The majority of the site is located on reclaimed land and is susceptible to flooding, inundation and subsidence.



Nelson Foreshore reclamations 1969, (left) and 1964 (right). Source: Nelson Photo News



Saltwater Creek Bridge, 1906.



Subsidence is an issue due to unconsolidated fill beneath the surface.

RUTHERFORD & TRAFALGAR PARKS & MAITAI WALKWAY
FOR NELSON CITY COUNCIL BY Wā

PHYSICAL CONTEXT



NELSON'S PLAYGROUND

"Bowling greens, lawn tennis and basketball courts, rugby fields and adjacent sportsclubs' buildings, fill the best part of this picture. Just out of the pic, on the left, is a further area of sports ground at Rutherford Park and at right rear, Neale Park headquarters of hockey. Surely one of the biggest sporting areas in any city in New Zealand." Nelson Photo News (1963) No. 32, June 22, p 25.



CURRENT COMMUNITY GROUPS AND ACTIVITIES

Today the river and parklands are an important base for a wide variety of community and sporting activities:

RUTHERFORD PARK

- » The Trafalgar Centre [A]
- » Croquet clubrooms; 9 x croquet lawns [B]
- » Small Bore Rifle Range and clubrooms [C]
- » Band Room - Nelson Highland Pipe Band [D]
- » Asphalt multi-use sports courts, inc, Prorider Motorcycle Training [E]
- » 8 x Tennis Courts [F]
- » 6 x Squash courts [G]
- » Arts Space [H]
- » The Plunket Room [I]
- » Citizens Advice Bureau [J]
- » Skatepark [K]
- » Former Bowling Greens - now petanque [L]
- » Kahurangi Employment Trust [M]
- » The Refinery [N]

TRAFALGAR PARK

- » Trafalgar Park [O]
- » Trafalgar Park Pavilion [P]
- » Band Room - Nelson city Brass Band [Q]
- » Nelson Bays Rugby Football Union [R]
- » Rugby Clubrooms - Nelson RFC [S]
- » Rugby Clubrooms [T]
- » Squash facilities - Celtic Squash Club [U]
- » Grounds Maintenance Sheds [V]

MAITAI RIVER

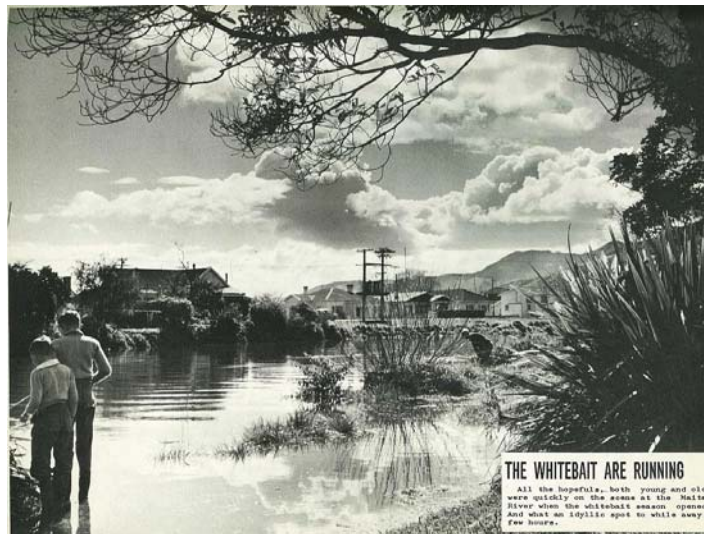
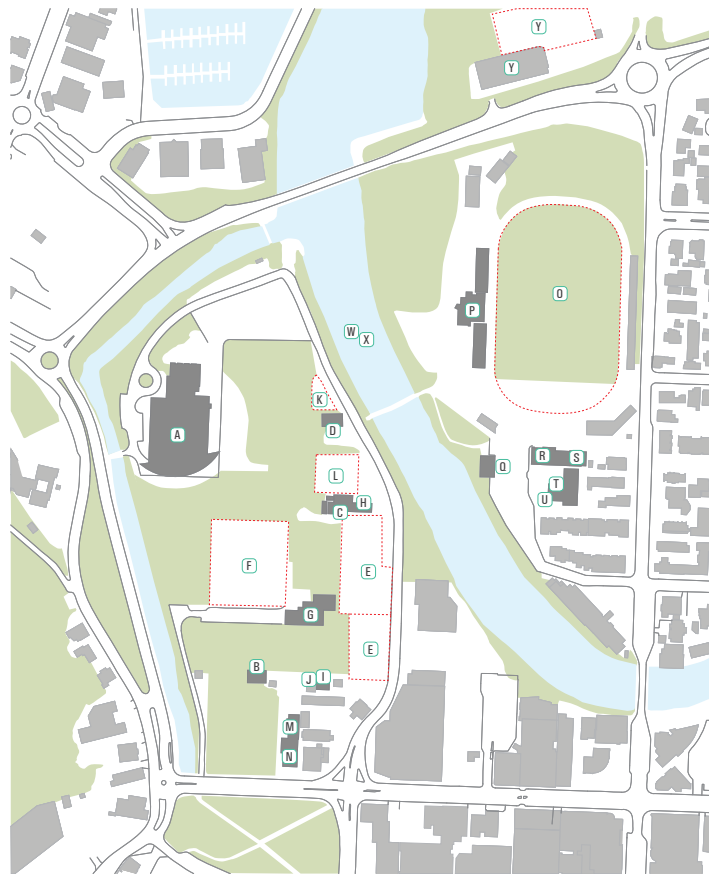
- » Kayaking/Boating [W]
- » Whitebaiting [X]

KINZETT TERRACE

- » Maitai Club & bowling greens [Y]

IN BRIEF

Activities and uses change over time. The park plans will need to provide flexible spaces and community facilities that can be adapted as uses change. A clear and simple circulation based structure will define spaces which can be modified as required to suit future activities.



[X] Whitebaiting, 1962

TRAFALGAR CENTRE EVENTS 2010-2011

- » Music Shows/Concerts - Local and International
- » Sporting Events
- » Car Rally
- » Expos / Trade Shows
- » Dance Competitions
- » Children's Performance
- » Rock Quest
- » Dances and Discos
- » Workshops
- » Functions



[O]



[R]



[U]



[Y]



[A]



[B]



[C]



[D]



[G]



[H]



[I&J]



[K]



[S]



[T]

RUTHERFORD & TRAFALGAR PARKS & MAITAI WALKWAY
FOR NELSON CITY COUNCIL BY Wā

COMMUNITY + ACTIVITY



IN BRIEF

The parklands suffer from poor visual and physical connections to their surrounding context.



① No indication of entry to parkland.



② River edge dominated by carparking, vehicle movement. River obscured by dense edge planting.



③ Bordered space with no or little connectivity.



④ Buildings have little public interface to park, many in poor condition and offer single use.

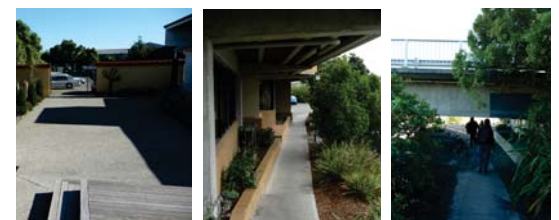


⑤ Point and connection to river, creek and Haven dominated by access and carparking.

⑥ Park is obscured and disconnected from Saltwater Creek and Haven Road.



⑦ Haven obscured by edge planting.



⑧ Poor connection.

ACCESS AND CIRCULATION

- » Generally access and circulation to and within Rutherford and Trafalgar Parks and Maitai Walkway are low in visibility and poor in quality.
- » Routes are indirect and lack legibility.
- » Recent works to Trafalgar park have locally improved access into the parks through the new shared space street.

PARKING

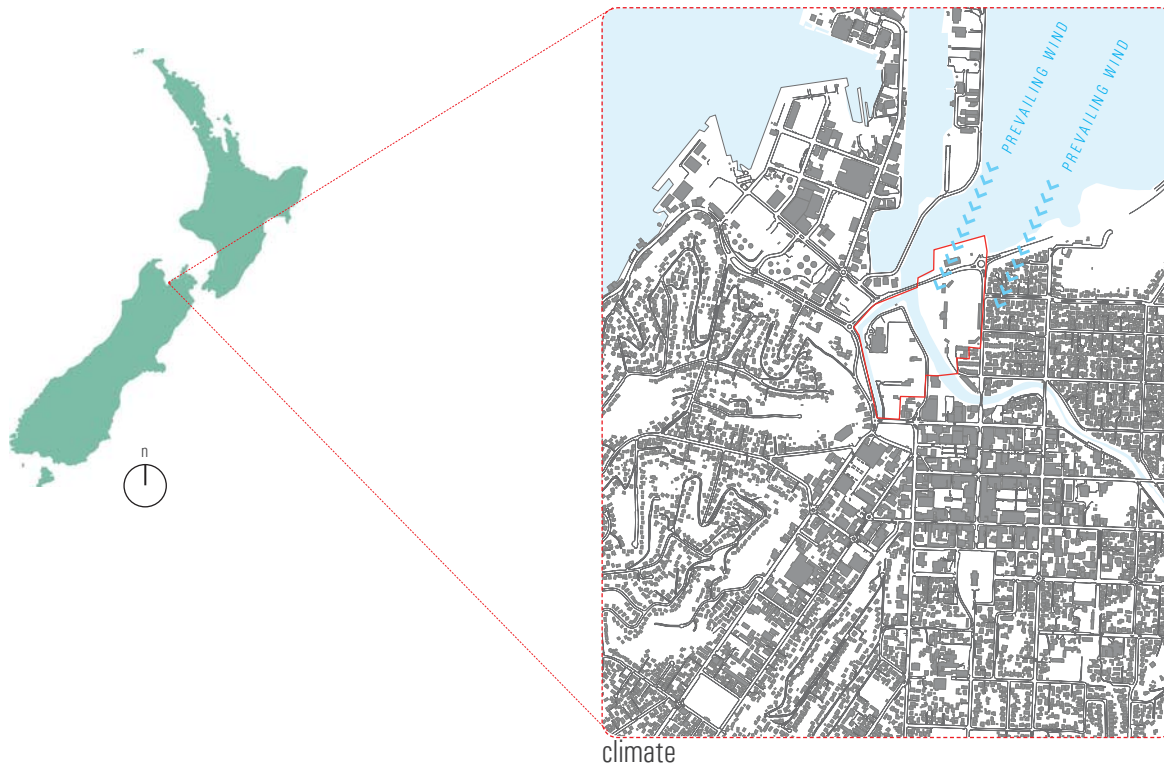
- » The 2010 Reserves Management Plan sets out the parking direction for the parks.
- » Parking in Rutherford Park has developed in an ad hoc manner, largely by default. The current location of parking dominates the perception of the park and diminishes the quality of the park's river edge.
- » At present, a total of 200 parking spaces are provided immediately adjacent to the Trafalgar Centre. Further afield, 30 spaces are provided next to the squash club and 35 spaces on the internal (western) driveway linking Halifax Street to the squash club. An additional 91 spaces are available on Paru Paru Road
- » Trafalgar Park has a more localised car parking layout, however this still impinges on the river edge.
- » At present there are approximately 120 parking bays in the vicinity of Hathaway Terrace, both on street and in the Trafalgar Park carpark. The Carpark at the Maitai Club has a less formal layout and capacity for approximately 80 cars.
- » Trafalgar Halifax Streets have some on-street parking.

RUTHERFORD & TRAFALGAR PARKS & MAITAI WALKWAY

FOR NELSON CITY COUNCIL BY Wā

EXISTING CONDITION





climate

ENVIRONMENTAL QUALITY

CLIMATE

- » Temperate climate, sunniest region of New Zealand.
- » Wind: North-northeast winds prevail in Nelson. Nelson has less wind than many other urban centres and its temperatures are often moderated by sea breezes. Average wind speed: 12 km/h

VEGETATION

- » The parks and river edges are highly modified environments. Planting within the parks is a mix of native and exotic species. Planting along the creek and river edges is reasonably established but screens views of the waterways from the park and into the park.
- » The planting generally lacks structure and primarily borders spaces. This has the effect of dissecting the park into parts and hinders the overall reading of the parkland.
- » The 2010 Reserves Management Plan provides objectives and policies for improving biodiversity for these areas. The proposed plan delivers on these objectives and policies.

COASTAL MARGINS AND RIVER EDGES

- » These are important components of the park's and city's identity. However they are currently in poor condition both environmentally and aesthetically. Connections, both visual and physical are difficult. These parklands hold the key to unlocking the potential of these environments and reconnecting them to the city.



river edge_urban park with vegetated river fringe



river edge_vegetated edge 'naturalistic' with constructed shore edge



river edge_degraded constructed edge



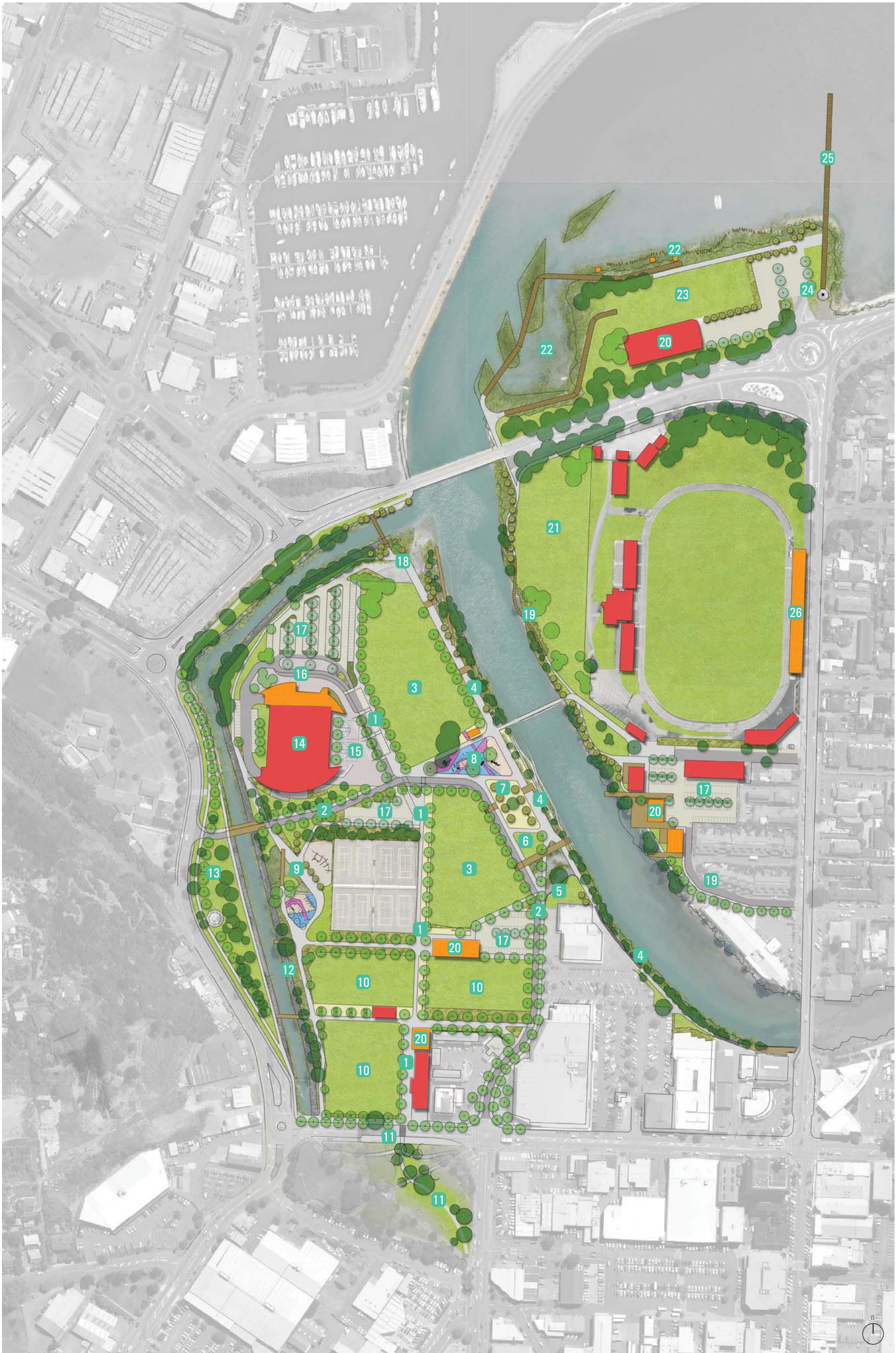
river edge_historical *Mill Buildings, Maitai River, Nelson, 1866* by Gully, John.

Source: National Library of New Zealand. <http://beta.natlib.govt.nz/records/23210082>







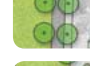

RUTHERFORD & TRAFALGAR PARKS & MAITAI WALKWAY
FOR NELSON CITY COUNCIL BY Wā

ENVIRONMENTAL QUALITY





- 1 Central Pedestrian Spine
- 2 Paru Paru Road - Park Boulevard
- 3 Flexible events lawns
- 4 Maitai Walkway River Promenade
- 5 Point Park marking old shoreline with stone seating wall and estuary edge gardens
- 6 Small scale events / sculpture lawn
- 7 Flexible petanque, performance, and temporary sculpture space
- 8 Playscape - children's landscaped playground with kiosk / public toilet / changing facility adjacent
- 9 Playscape - youth play & skate park
- 10 Croquet Courts
- 11 Halifax Street & Anzac Park Connection
- 12 Saltwater Creek edge enhancement & pathways
- 13 Moller Fountain parkland incorporated into Rutherford Park
- 14 Trafalgar Centre
- 15 Multi-use plaza accommodating service, half-ball courts, events space & parking
- 16 Trafalgar Centre drop off
- 17 New landscaped car parks
- 18 The Landing including improved small boat launching
- 19 New footpath & river walkway with boardwalk / deck access & outlook to Maitai River edge
- 20 Multi functional community facilities
- 21 Trafalgar Park river lawn - flexible events space
- 22 Estuarine ecological gardens including boardwalks, islands, and bird hides
- 23 Kinzett Terrace flexible events lawn
- 24 Nelson gateway sculpture
- 25 Boardwalk / Pier
- 26 New eastern Grandstand

-  New building
-  Existing building
-  Existing trees
-  New trees
-  Lawn
-  Limechip
-  Vehicle path and footpath
-  Boardwalk / Bridge / Deck

0m 50m 200m

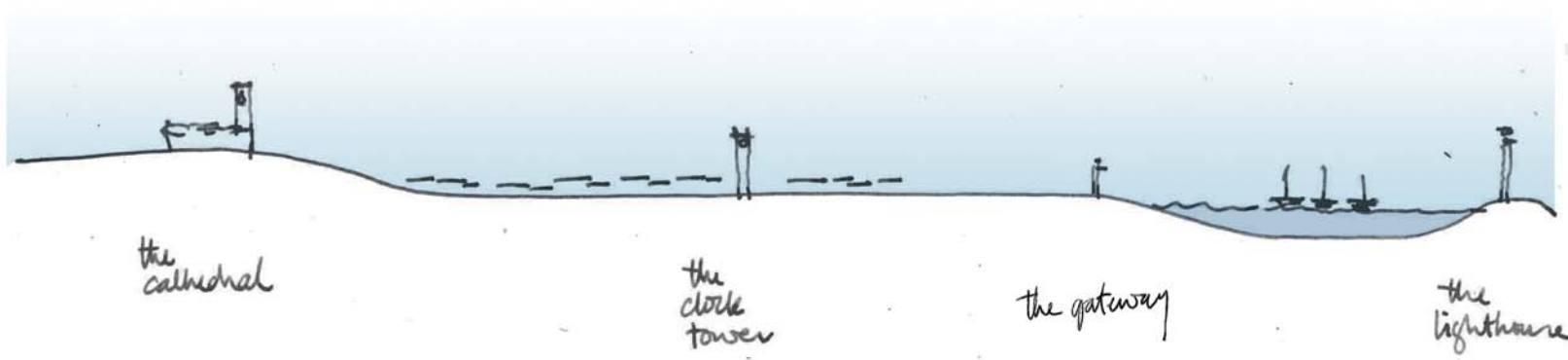
SCALE 1:1500 @ A1

RUTHERFORD & TRAFALGAR PARKS & MAITAI WALKWAY
FOR NELSON CITY COUNCIL BY Wā

THE CONCEPT PLAN



IDENTITY



NELSON - CITY TO SEA

STRUCTURE

<p>THE NATURAL SETTING:</p> <p>the river; the creek; the hills.</p>	<p>REINFORCE NORTH-SOUTH</p> <p>Improve Maitai walkways. Link to the city grid.</p>	<p>CULTURAL SPINE</p> <p>Add central pedestrian spine aligned to city grid</p>	<p>REINFORCE EAST-WEST</p> <p>Connect to wider setting and hills</p>	<p>ACTIVITY SPACES</p> <p>Kingzett Terraces Trafalgar Park - sports Trafalgar Centre - events Rutherford Park - flexible events spaces + community facilities Maitai River - natural / urban edge</p>	<p>CAR ACCESS</p> <p>Establish vehicular through-route for safety and accessibility</p>
--	--	---	---	--	--

KEY SPACES

CENTRAL PEDESTRIAN SPINE
an elevated walkway running north - south through the parklands.

THE MAITAI WALKWAY
constructed edge

THE MAITAI WALKWAY
natural edge

boundsville

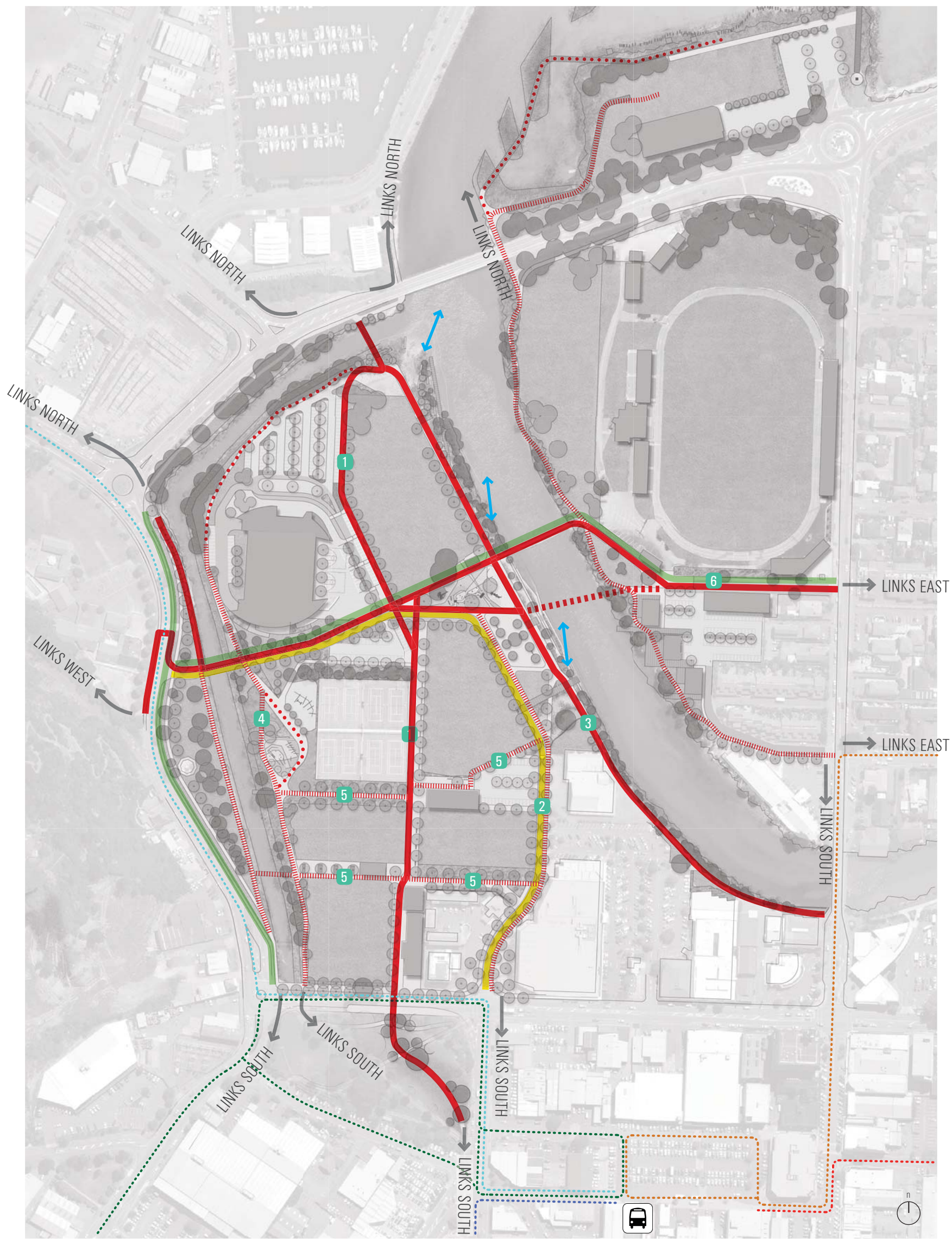


THE MAITAI WALKWAY
a diverse and active waterfront space, with both constructed and natural edges

RUTHERFORD & TRAFALGAR PARKS & MAITAI WALKWAY
FOR NELSON CITY COUNCIL BY Wā

PRINCIPLES





- Major Pedestrian Route
- - - - Potential future realign
- ⋯⋯⋯ Minor Pedestrian Route
- ⋯⋯⋯ Tertiary Pedestrian Route
- Major Cycle Route
- ↔ Boat/Waka landing opportunities
- Primary vehicle access
- - - - Bus route - Nelson>Tahunanui>Stoke>Richmond incl. late bus
- - - - Bus route - Nelson>Bishopdale>Stoke>Richmond incl. late bus
- - - - Bus route 1 Hospital Toi Toi
- - - - Bus route 2 Atawhai
- - - - Bus route 3 The Brook
- SBL Nelson Bus Services

- 1 Central Pedestrian Spine
- 2 Park Boulevard Paru Paru Road
- 3 Maitai Walkway
- 4 Saltwater Creek Path
- 5 Cross Park Links
- 6 East West Link

RUTHERFORD & TRAFALGAR PARKS & MAITAI WALKWAY
FOR *NELSON CITY COUNCIL* BY *Wā*

10

ACCESS



Flexible Events Lawns



Flexible Events Lawns



Tennis Courts



Croquet Lawns



Playscapes



Waka ama

- 1 Trafalgar Centre
- 2 Flexible Events Lawns
- 3 Tennis courts x 8
- 4 Croquet lawns x 9 total
- 5 Youth playground / skate
- 6 Playground, toilets / kiosk
- 7 Community art + cultural facility
- 8 Flexible community facility
- 9 Existing rugby club
- 10 Band rooms
- 11 Rugby practice pitch
- 12 Events stage area
- 13 Petanque and temporary sculpture space
- 14 High quality sportsfield
- 15 Half-ball courts

The proposal intends to retain the diversity of recreation uses and to add additional activities, such as playgrounds, that will make the place more vibrant and an appealing destination to a wide range of people. Programmed spaces are proposed for specific activities, and unprogrammed spaces provide flexibility for events and future uses.

RUTHERFORD & TRAFALGAR PARKS & MAITAI WALKWAY
FOR NELSON CITY COUNCIL BY Wā

11 ACTIVITIES



Landings



Planted River Edge



Bridged Deck and walkways and cycleways



Playscape



Bird Hide



Furniture - multi purpose - table/seal

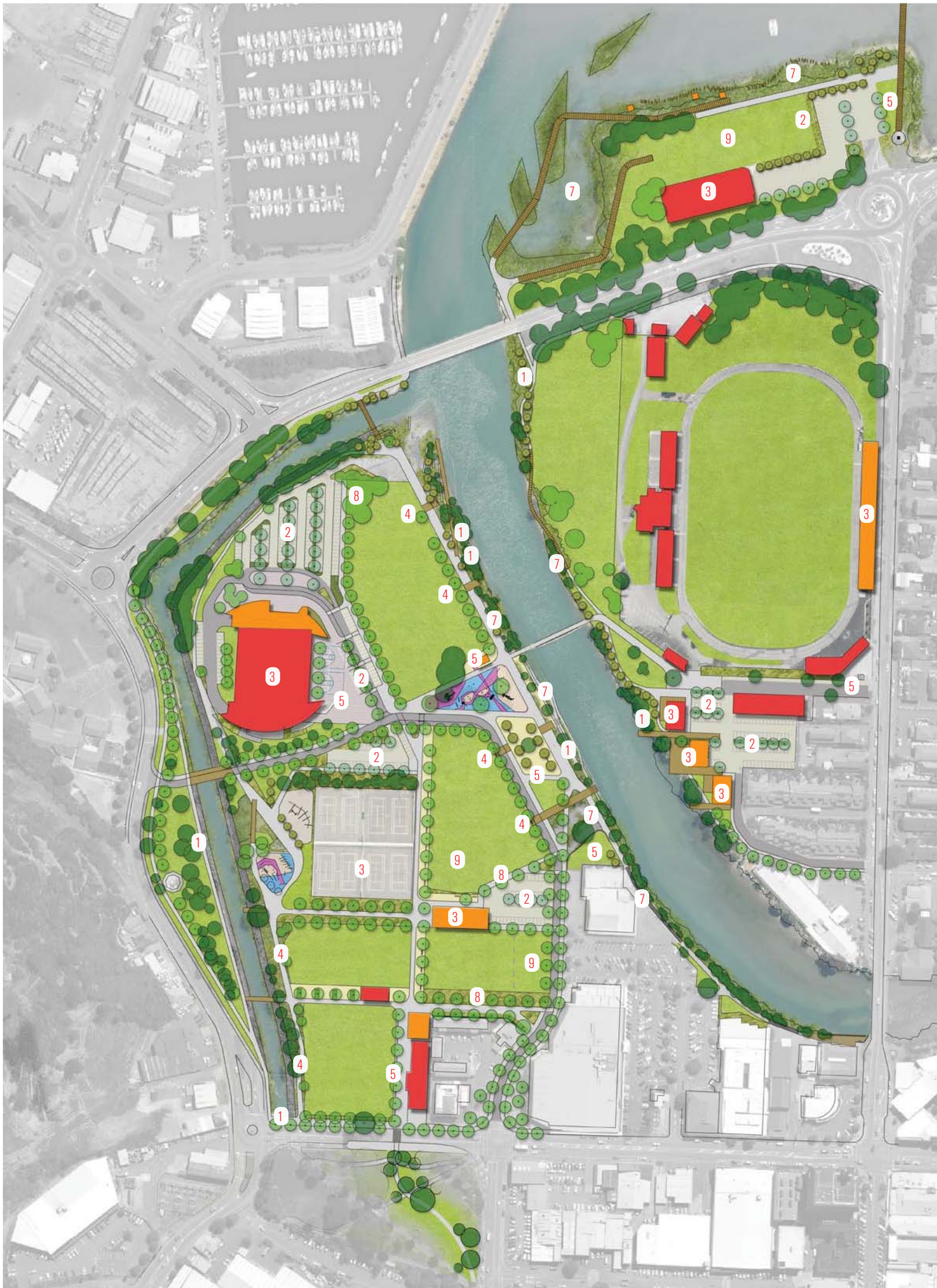
- 1 River promenade
- 2 Landings
- 3 Tidal terraces
- 4 Planted river edge
- 5 Ramp access
- 6 Bridged decks
- 7 Overland flow path
- 8 Upgrade bridge (saltwater creek)
- 9 Playscape
- 10 Historic headland park
- 11 Petanque
- 12 River edge deck
- 13 Bird Hide

--- 1840 shoreline

One of the important sites for development will be the Maitai River edges. In this proposal we intend to interpret the cultural significance, enhance the identity of Nelson's connection to the sea, improve ecological quality and create a setting for diverse activities.

RUTHERFORD & TRAFALGAR PARKS & MAITAI WALKWAY
FOR NELSON CITY COUNCIL BY Wā

12 WALKWAY



1 Improve storm water outlets



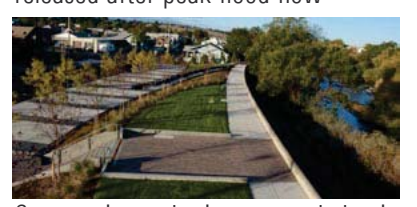
2 Water treatment of surface stormwater in bioretention swales



3 Roof water to be stored and reused for irrigation



4 Flood outlets allow waters to be released after peak flood flow



5 Community gathering spaces help give ownership of park to people who will care for the environment



6 Carbon zero opportunities to be explored through energy collection in park



7 Biodiversity of environment enhanced by site endemic planting



8 Extensive tree planting in mixed endemic and exotic species

9 Potential areas for community gardens. Offers future food security / education



Sustainability is a key objective of the project. This will be embodied in all aspects of the park's development, and includes community involvement in the park's planning and management, as well as environmental initiatives to clean and reuse stormwater and practice responsible energy use.

RUTHERFORD & TRAFALGAR PARKS & MAITAI WALKWAY
FOR NELSON CITY COUNCIL BY Wā

ENVIRONMENT



HOW IT MIGHT HAPPEN - STAGES



2013 - Maitai Walkway



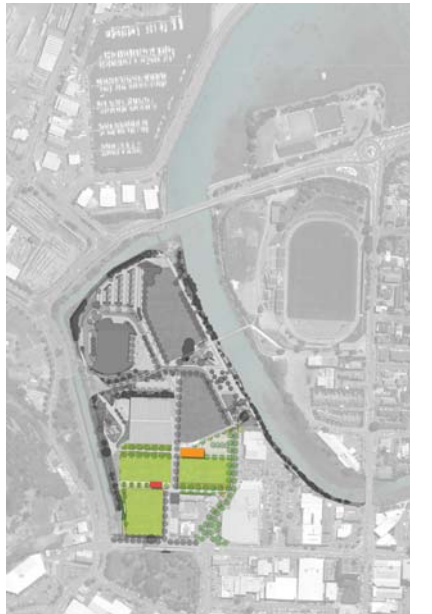
2014 - Trafalgar Centre + Events Lawn + Playground + Boulevard



The Cultural Spine



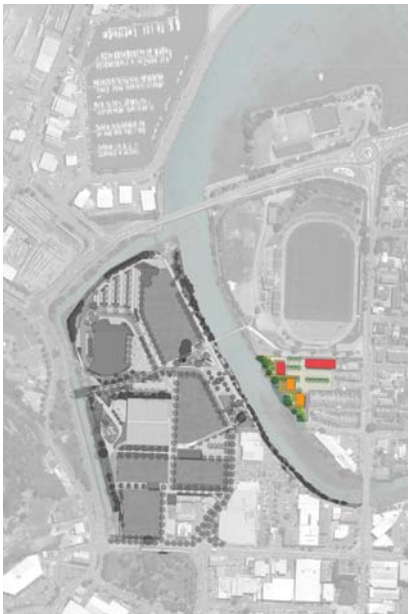
The Playground - Skate



The Rutherford Sports Clubs



Bridge over Saltwater Creek



Trafalgar Sports Clubs + River Walkway



Haven Road

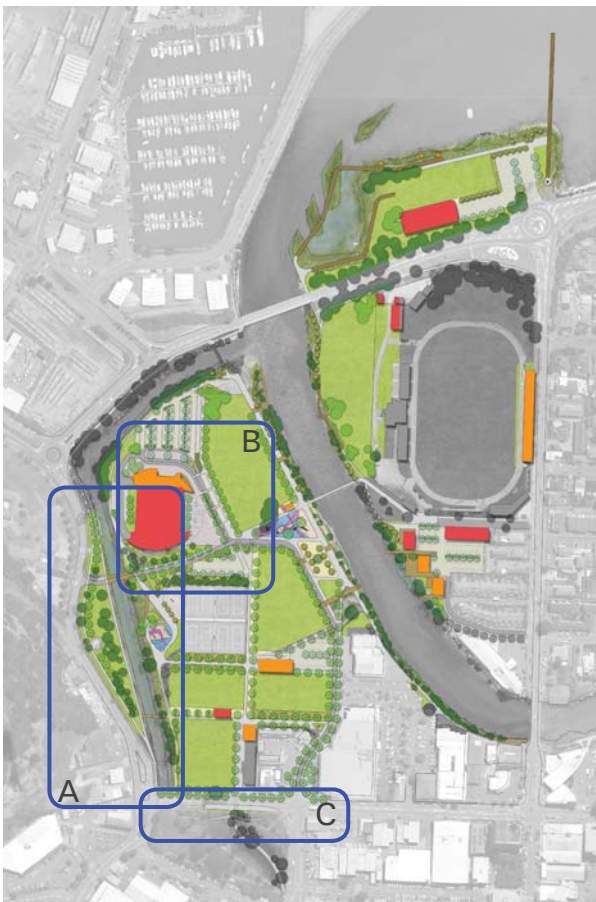


Trafalgar River Lawn + River Walkway



Kinzett Terrace

OPTIONS



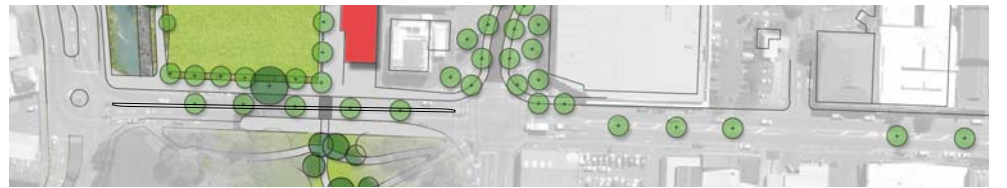
Options



A Retain Haven Road



B Alternative Trafalgar Centre drop off



C Alternative Halifax Street with median

14

RUTHERFORD & TRAFALGAR PARKS & MAITAI WALKWAY
FOR NELSON CITY COUNCIL BY Wā

STAGING + OPTIONS